

Case Study

The Royal Surrey County Hospital

- Customer: The Royal Surrey County Hospital
- No of units installed: 11,516
- Electricity Bills: Reduced by £52,800+ / year
- CO₂ Savings: 552 tonnes / year

Award-winning energy-saving programme reduces hospital carbon footprint by 552 tonnes a year.

PROJECT OVERVIEW

A large-scale installation of energy-efficient lighting, using the retrofit converter device, 'Save It Easy®', has allowed the Royal Surrey County Hospital to slash its electricity bills by more than £50,000 a year.



BACKGROUND

The Royal Surrey County Hospital in Guildford treats over 260,000 patients a year in its 20-ward main building. Gary Mountjoy, Estates Manager at the hospital, is forever searching for ways to cut costs throughout the site. "This hospital is run on behalf of its local community, therefore it is our responsibility to make sure that it is run in the most cost efficient way and that the environmental impact on the community is minimum," he says.

THE CHALLENGE

Electricity and more specifically, lighting costs, is a huge outlay for the hospital, but finding ways to cut these costs without expensive purchase and installation costs was difficult. Though low-energy fluorescent lighting offered significant energy savings, a large drawback was that the new generation of efficient lamps required a different type of ballast. Replacing both the lamps and the luminaires would be an expensive task. A retrofit solution was needed in order to make an energy-efficient lighting upgrade financially viable for the hospital.

Case Study

The Royal Surrey County Hospital

THE SOLUTION

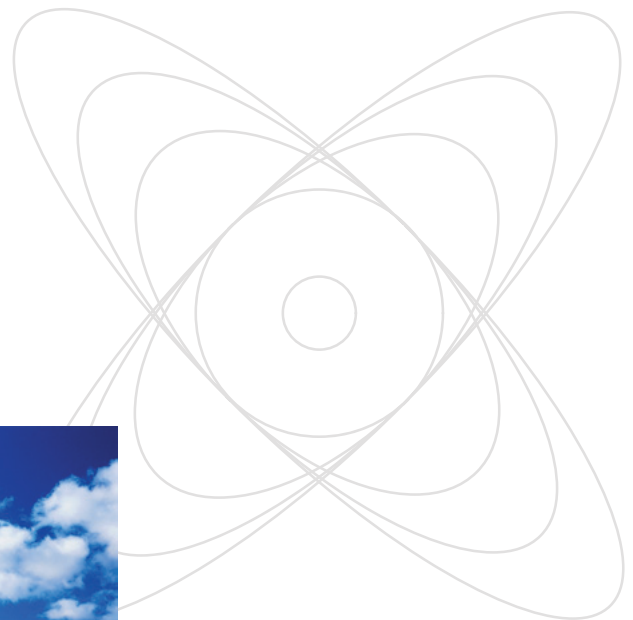
When he found out about Save It Easy – a retrofit converter that allowed the new lamps to be slotted into the existing fittings – Royal Surrey's Mr Mountjoy felt compelled to trial it. At the Royal Surrey, the trial took place in the common areas, such as waiting rooms and corridors – areas typically lit 24 hours a day, throughout the year. The pilot installation consisted of 980 units to convert 4ft T8 tubes into 4ft T5 tubes, using the Save It Easy units to ensure the different sized tubes fitted the original luminaires.

The Save It Easy trial proved so successful – producing an annual cost saving of £6,730 and an annual CO₂ emissions saving of 59 tonnes – that it was possible to mobilise additional budget for a complete site roll-out. A further 10,536 Save It Easy converters were installed, with little disruption to the daily workings of the hospital.

RESULTS AND OUTCOME

As a result of installing the Save It Easy units, the Royal Surrey was able to reduce its annual energy bills by £52,848 and netted an annual saving of 552 tonnes of carbon dioxide. The project subsequently paid for itself in just two years.

The efforts of the Royal Surrey County Hospital and Gary Mountjoy to cut carbon were rewarded when Mr Mountjoy was chosen as the recipient of the Low Carbon Award as part of the NHS Best of Health Awards.



info@energysgroup.com
www.energysgroup.com
TEL +44 (0)1403 786212