

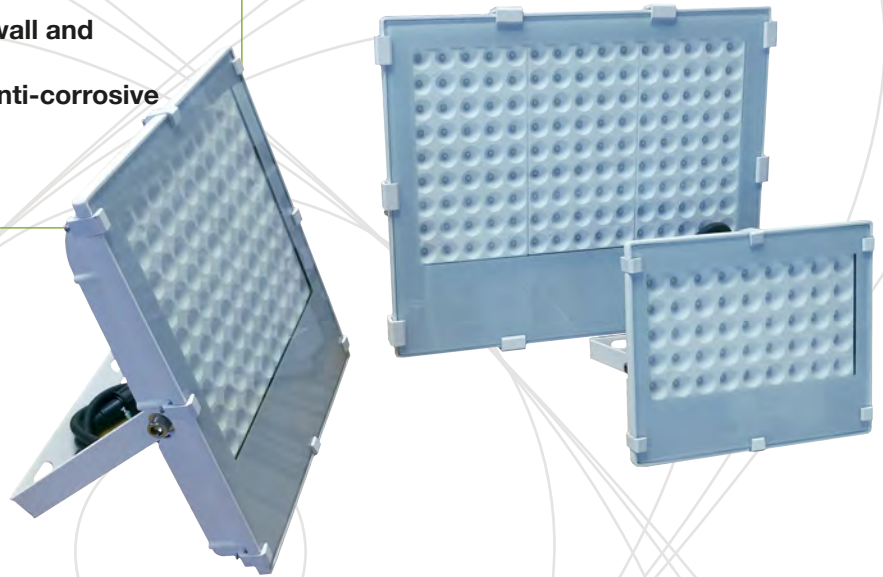
LED Flood Light

ENERGYs™



NEWVISION
CREE

- ▶ Slimline modern design
- ▶ Over 100,000 hours life expectancy
- ▶ 7 years manufacturer's warranty
- ▶ Adjustable angles for wall and floor mount
- ▶ Aluminium case with anti-corrosive case coating
- ▶ Rated IP65 and IK07



A range of flood lights representing the very best combination of performance and value for money

Key Features:

The New Vision range of flood lights from 10 to 200 watts of power provides the highest possible specification at a sensible price.

These flood lights have been designed to withstand harsh external conditions. The casing is aluminium with an anti-corrosion coating ensuring long life, the optical cover is high strength glass and the flood light has an impact rating of IK07. The drivers are rated to IP67 and are fully enclosed in an IP65 housing.

DRIVER FEATURES

IP67 rated driver within IP65 housing

Auto restart

High efficiency driver >92%

Flood Light - FDS / FDH series

Family : Weather Proof / IP65 Flood Light / FDS & FDH



Technical Overview

Product Code	Dimensions Length x Width x height	Chips		Lamp				
		CRI	Efficacy	Photometric		Electrical		
				Efficacy	Lumen	Input Voltage	Input current @ 240Vac	System Power
FDS-01020-740-S01	180 x 155 x 40mm	>70	145 lm/W	110 lm/W	2,200 lm	200-240 Vac (50/60Hz)	83 mA	20.0 W
FDS-02035-740-S01	227 x 190 x 40mm	>70	145 lm/W	110 lm/W	3,850 lm		146 mA	35.0 W
FDS-03070-740-S01	268 x 310 x 45mm	>70	145 lm/W	110 lm/W	7,700 lm		292 mA	70.0 W
FDS-04105-740-S01	378 x 310 x 48mm	>70	145 lm/W	110 lm/W	11,550 lm		438 mA	105.0 W
FDS-05140-740-S01	444 x 333 x 50mm	>70	145 lm/W	110 lm/W	15,400 lm		583 mA	140.0 W
FDS-05140-740-S01								
FDH-01030-740-S01	180 x 155 x 40mm	>70	135 lm/W	100 lm/W	3,000 lm	200-240 Vac (50/60Hz)	125 mA	30.0 W
FDH-02050-740-S01	227 x 190 x 40mm	>70	135 lm/W	100 lm/W	5,000 lm		208 mA	50.0 W
FDH-03100-740-S01	268 x 310 x 45mm	>70	135 lm/W	100 lm/W	10,000 lm		417 mA	100.0 W
FDH-04150-740-S01	378 x 310 x 48mm	>70	135 lm/W	100 lm/W	15,000 lm		625 mA	150.0 W
FDH-05200-740-S01	444 x 333 x 50mm	>70	135 lm/W	100 lm/W	20,000 lm		833 mA	200.0 W

notes

- Standard product CCT is 4000K, for 2700K or 6000K, replace 740 in code with 727 or 760
- Customised power available on order, replace current max. power 016, 032 or 048 in code with the required power
- 2700K products will yield 5% less efficacy and therefore 5% less light output
- Efficacy between Chip and Lamp level differs due to optical & driver losses

Specifications	
Operating temperature	-25 to +40°C
Driver life expectancy	FDS 100,000 hours (MTBF @ta=25°C) FDH 100,000 hours (MTBF @ta=25°C)
Lumen maintenance @ max. power @ ta=25°C	L90 B10 @ 35,000 hours L80 B10 @ 65,000 hours L70 B10 @ 100,000 hours
Warranty	7 years
Protection rating	IP65 / IK05
Diffuser Material	Glass
Body material	Anti-corrosion coated Aluminium

Compliance	
Low Voltage (Safety) Directive 2014/35/EU	
EN 60598-1	
EN 60598-2	
EMC Directive 2014/30/EU	
EN 55015	EN 61000-3-2
EN 61547	EN 61000-3-3
EN 62493	
LED Drivers	
EN 61347-1	EN 62384
EN 61347-2-13	
SELV 60	 
ROHS	